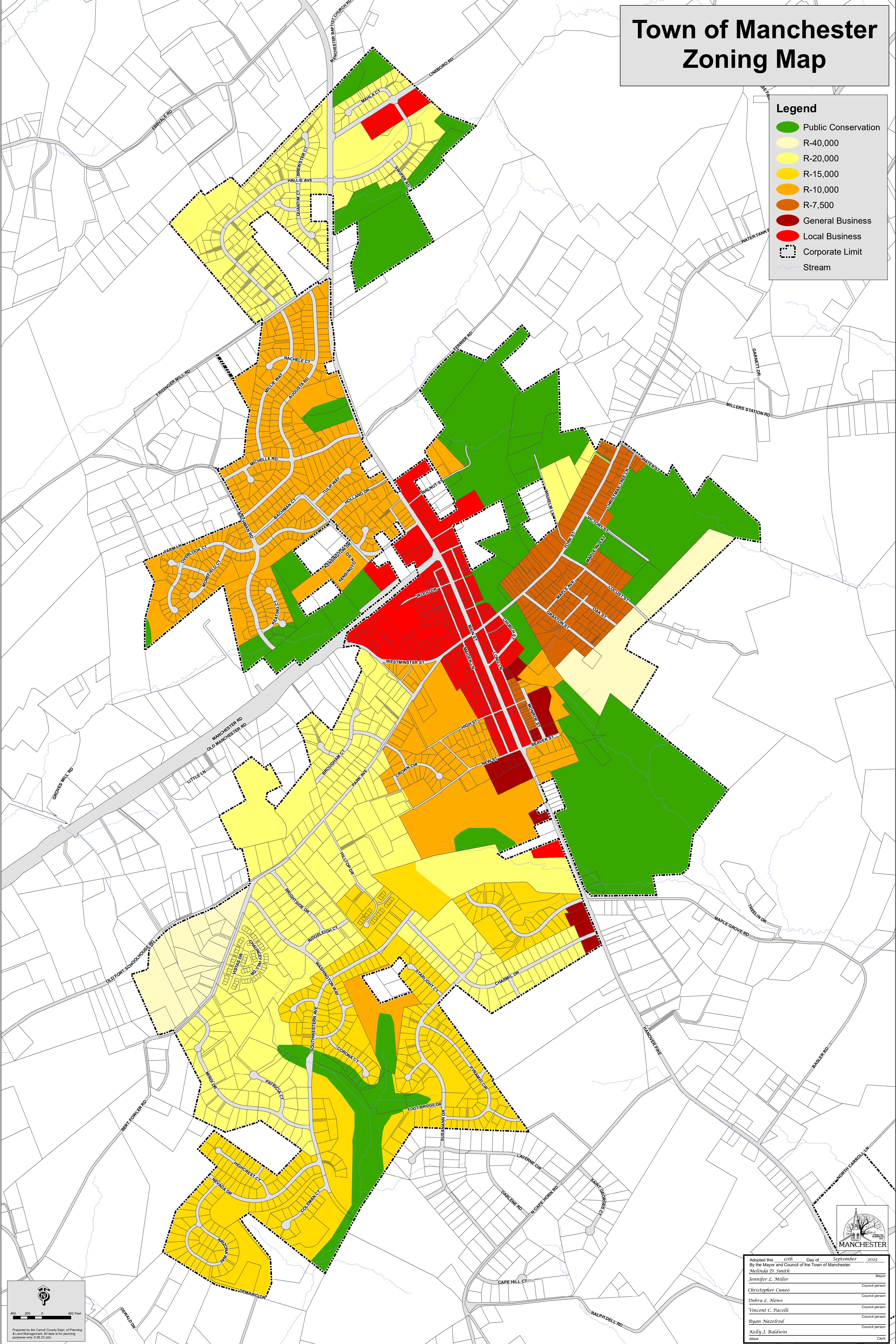


# Town of Manchester Zoning Map

**Legend**

- Public Conservation
- R-40,000
- R-20,000
- R-15,000
- R-10,000
- R-7,500
- General Business
- Local Business
- Corporate Limit
- Stream



Scale: 0 to 400 Feet

Prepared by the Carroll County Dept of Planning & Land Management. All data is for planning purposes only. 9.26.23 (bb)



Adopted this	12th	Day of	September	2023
By the Mayor and Council of the Town of Manchester.				
<i>Melinda D. Smith</i>	Mayor			
<i>Jennifer L. Miller</i>	Council person			
<i>Christopher Cuneo</i>	Council person			
<i>Debra L. Howe</i>	Council person			
<i>Vincent C. Pacelli</i>	Council person			
<i>Ryan Nazelrod</i>	Council person			
<i>Kelly J. Baldwin</i>	Clerk			
Attest				